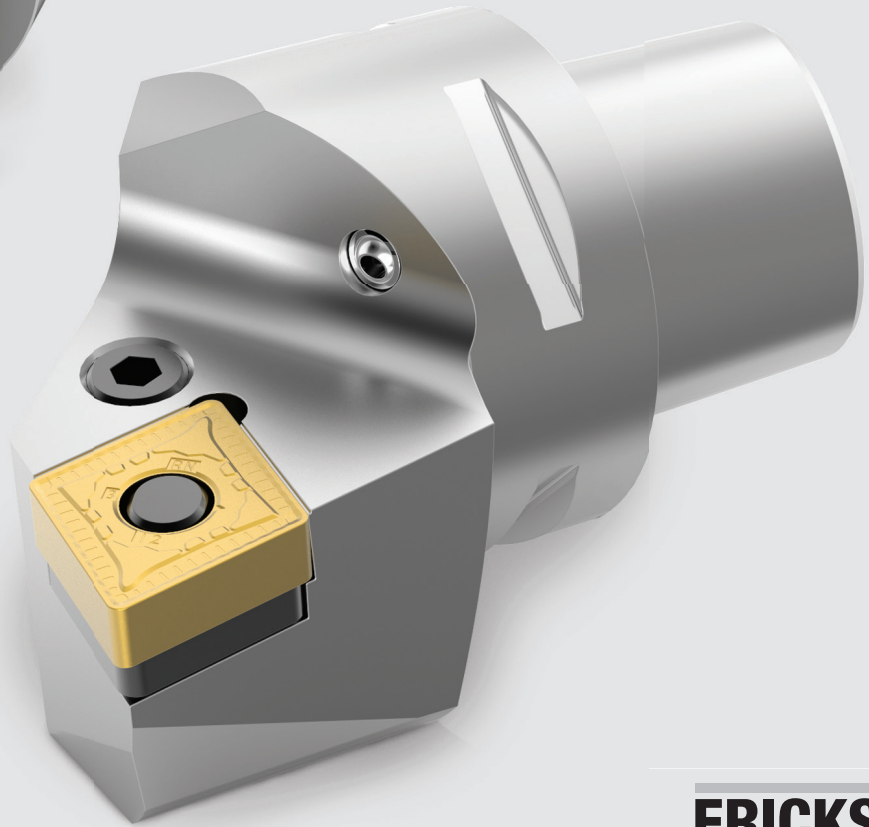




PSC50, PSC63 Static & Rotating Tools



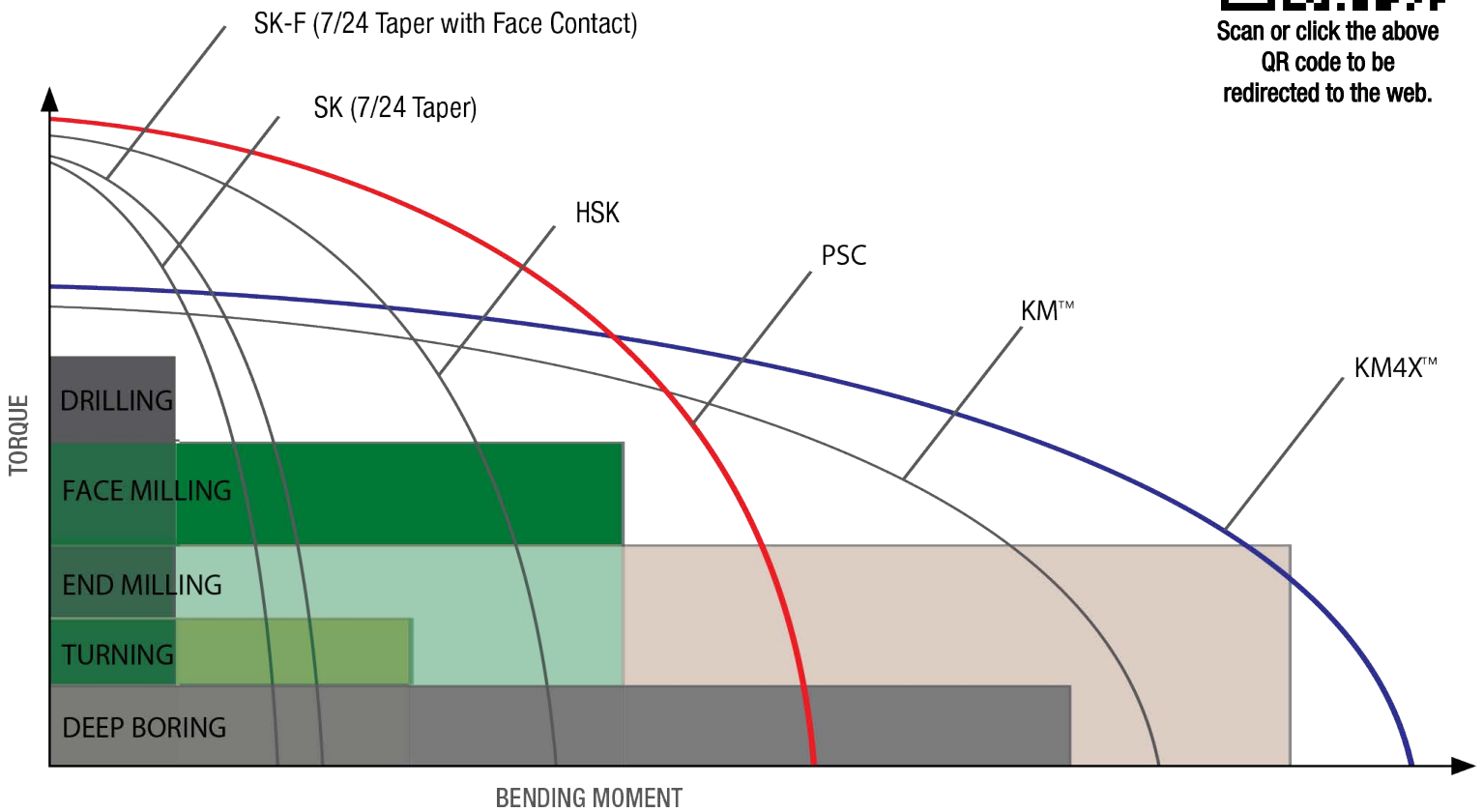
ERICKSON™

- Rotating holders include collet chucks, Shrink Fit chucks, hydraulic chucks, end mill holders, and drill holders.
- Extensions to build custom-length tools.
- Static cutting heads for a wide variety of ANSI/ISO turning inserts.
- Modular units to hold cutting blades for grooving, cut-off, face grooving, and multi-directional turning.
- Modular units to hold Top Groove™ cutting blades for grooving and threading.
- ISO 26623 compliant. Polygonal taper.
- High torque transmission.
- Compatible with all PSC63 machines and tooling.
- Through-coolant enabled.

[Click here](#) to view entire offering on the web.



Scan or click the above QR code to be redirected to the web.



The Polygonal Shank Coupling (PSC) is an established ISO 26623 standard connection, offering modular flexibility and utility for lathe and multi-axis machine tool applications.

While modular KM™ and KM4X™ connections can achieve higher speeds, greater clamping forces, and bending moment stability, PSC provides an alternative option compared to traditional steep taper or HSK connections.