



RPM(K)T Milling insert

Feature:

Strong edge, perfect abrasive resistance, high stability, wide cutting scope.
Performance exceed famous brand.

Application:

- GH: Stainless steel, Titanium alloy,
Heat resisting alloy,
Low-carbon steel.
- ST: Steel, cast iron.

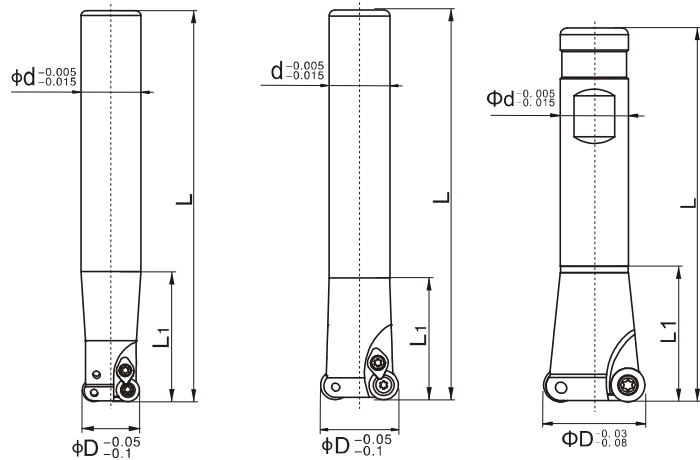


		PVD			parameters		
		CP2630TN CP2640TN	CP1130FH	CP2430			
					Vc (mm/min)		
Material group	P	Steel	✳		✳	120-160-250	
	P	P20, 718, SKD11, S136H	✳		✳	100-130-160	
	P	HRC40-63 Steel		☉		50-80-120	
	M	Stainless steel	✳	☉	✳	60-110-150	
	K	Cast iron	✳	☉	✳	150-180-220	
	S	Titanium alloy	✳		✳	40-60-80	
S	Heat-resisting steel	✳	☉		40-60-100		
Type specification		Use			Ap(mm)	f(mm/t)	
RPHT0802MO-GH		Stainless steel Titanium Mild steel	✳	☉	☉	0.15-0.30	0.25-0.4
RPHT08T2MO-GH			✳	☉	☉	0.15-0.30	0.25-0.4
RPHT10T3MO-GH			✳	☉	☉	0.30-0.50	0.3-0.6
RPHT1204MO-GH			✳	☉	☉	0.30-0.50	0.3-0.6
RPKT10T3MO-JS		Stainless steel Soft steel Steel HRC50-63	✳	☉	☉	0.20-0.30	0.2-0.3
RPKT1204MO-JS			✳	☉	☉	0.20-0.30	0.2-0.3
RPKW1003MO-ST5			✳	☉	☉	0.20-0.30	0.2-0.3
RDKW1003MO-ST9		HRC<50 S50C P20 718, 738H Cast iron	✳		✳	0.30-0.50	0.3-0.6
RDMT10T3MO-ST14			✳		✳	0.30-0.50	0.3-0.6
RPKW1003MO-ST14			✳		✳	0.40-0.80	0.5-1.0
RPMT1204MO-ST14			✳		✳	0.30-0.50	0.3-0.6
RDMT1204MO-ST14			✳		✳	0.40-0.80	0.5-1.0
RDMT1604MO-ST14			✳		✳	0.60-1.20	0.8-1.2
RDMT1605MO-ST14			✳		✳	0.60-1.20	0.8-1.2
RPMT1606MO-GH			✳		✳	0.60-1.20	0.6-1.2

CP2430 suitable for dry or air-cooled cutting



★ EMR endmills



A type

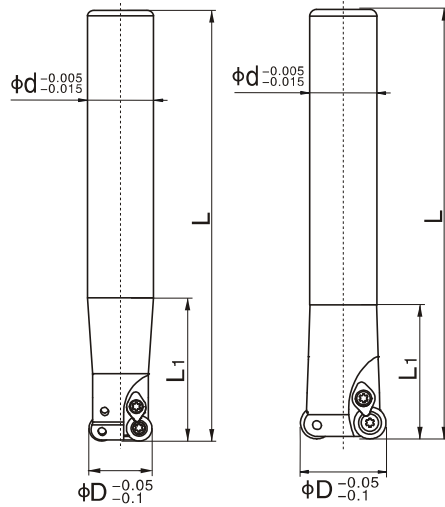
B type

C type

MODEL NO.	z	type	mm					MS3070	T10F T10	-	inserts
			D	d	L	L1	L2				
EMR-4Rx12x120	1	A	12	12	120	40	-	MS3070	T10F T10	-	RP□□0802
EMR-4Rx13x120-C12	1	B	13	12	120	40	-				
EMR-4Rx16x120	2	A	16	16	120	40	-	MS3070	T10F T10	A-4R	
EMR-4Rx16x160	2	A	16	16	160	40	-				
EMR-4Rx17x160-C16	2	B	17	16	160	40	-				
EMR-4Rx20x120	2	A	20	20	120	40	-				
EMR-4Rx20x160	2	A	20	20	160	50	-	MS4090 MS35100	T15F T15	A-5R	RP□□1003
EMR-4Rx21x160-C20	2	B	21	20	160	50	-				
EMR-5Rx20x120	2	A	20	20	120	50	-				
EMR-5Rx20x160	2	A	20	20	160	50	-				
EMR-5Rx21x160-C20	2	B	21	20	160	50	-				
EMR-5Rx25x120	2	A	25	25	120	50	-				
EMR-5Rx25x160	2	A	25	25	160	50	-				
EMR-5Rx25x200	2	A	25	25	200	75	-				
EMR-5Rx30x110-C20	2	C	30	20	110	40	-				
EMR-5Rx30x160-C25	2	B	30	25	160	50	-				
EMR-5Rx30x200-C25	2	B	30	25	200	50	-				
EMR-5Rx32x160	2	A	32	32	160	50	-				
EMR-5Rx32x200	2	A	32	32	200	60	-				
EMR-5Rx32x250	2	A	32	32	250	60	-				
EMR-5Rx35x160-C32	3	B	35	32	160	50	-				
EMR-5Rx35x200-C32	3	B	35	32	200	50	-				
EMR-5Rx35x250-C32	3	B	35	32	250	60	-				
EMR-5Rx40x160-C32	4	B	40	32	160	50	-				
EMR-5Rx40x200-C32	4	B	40	32	200	50	-				
EMR-5Rx40x250-C32	4	B	40	32	250	60	-				



EMRW endmills



A type

B type

A-66

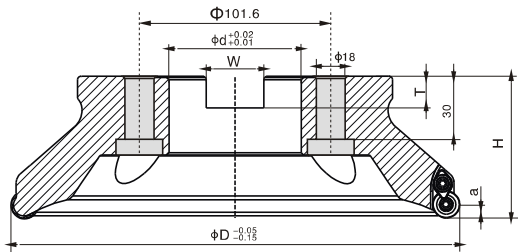
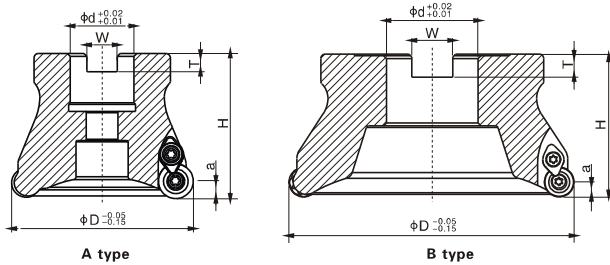
MODEL NO.	z	type	mm								inserts
			D	d	L	L1	L2				
EMRW-6Rx25x160	2	A	25	25	160	50	-	MS40100 MS40100	T15F T15	A-6R	RP□□1204
EMRW-6Rx32x160	2	A	32	32	160	50	-				
EMRW-6Rx32x200	2	A	32	32	200	60	-				
EMRW-6Rx32x250	2	A	32	32	250	60	-				
EMRW-6Rx35x160-C32	3	B	35	32	160	50	-				
EMRW-6Rx35x200-C32	3	B	35	32	200	60	-				
EMRW-6Rx35x250-C32	3	B	35	32	250	60	-				
EMRW-6Rx35x300-C32	3	B	35	32	300	60	-				
EMRW-6Rx40x160-C32	3	B	40	32	160	60	-				
EMRW-6Rx40x200-C32	3	B	40	32	200	60	-				
EMRW-6Rx40x250-C32	3	B	40	32	250	60	-				
EMRW-6Rx40x300-C32	3	B	40	32	300	60	-				

★ EMRF




MODEL NO.	z	type	mm								inserts
			D	d	L	L1	L2				
EMRF-5Rx25x160	2	A	25	25	160	60	-	MS4090 MS35100	T15F T15	A-5R	RPHT10T3MO-SF
EMRF-5Rx32x160	2	A	32	32	160	60	-				
EMRF-5Rx35x160-C32	3	B	35	32	160	60	-				
EMRF-5Rx35x200-C32	3	B	35	32	200	60	-	MS40100 MS40100	T15F T15	A-6R	RPHT1204MO-SF
EMRF-6Rx35x160-C32	3	B	40	32	160	60	-				
EMRF-6Rx35x200-C32	3	B	40	32	200	60	-				
EMRF-6Rx40x160-C32	3	B	40	32	250	60	-				
EMRF-6Rx40x200-C32	3	B	40	32	300	60	-				



★ EMR, EPRW, EMRF



type
C

MODEL NO.	Z	type	mm								inserts
			D	d	H	W	T				
EMR-4R-40-16	4	A	40	16	42	8.4	6.3	MS3070	T10F T10	A-4R	R□□0802
EMR-4R-50-22	5	A	50	22	42	10.4	6.3				
EMR-5R-50-22	4	A	50	22	50	10.4	6.3	MS4090 MS35100	T15F T15	A-5R	R□□1003
EMR-5R-63-22	5	A	63	22	50	10.4	6.3				
EMR-5R-80-27	6	A	80	27	50	12.4	7				
EMR-5R-100-32	6	B	100	32	50	14.4	8				
EMR-5R-50-25.4	4	A	50	25.4	50	10	6				
EMR-5R-63-25.4	5	A	63	25.4	50	10	6				
EMR-5R-80-25.4	6	A	80	25.4	50	12	6	MS40100 MS40100	T15F T15	A-6R	R□□1204MO
EMRW-6R-50-22	4	A	50	22	50	10.4	6.3				
EMRW-6R-63-22	5	A	63	22	50	10.4	6.3				
EMRW-6R-80-27	6	A	80	27	50	12.4	7				
EMRW-6R-100-32	6	B	100	32	50	14.4	8				
EMRW-6R-125-40	6	B	125	40	63	16.4	9				
EMRW-6R-160-40	8	B	160	40	63	16.4	9				
EMRW-6R-200-60	10	C	200	60	63	25.7	14				
EMRW-6R-50-25.4	4	A	50	25.4	50	10	6				
EMRW-6R-63-25.4	5	A	63	25.4	50	10	6				
EMRF-6R-40-16	4	A	40	16	42	8.4	6.3	MS40100 MS40100	T15F T15	A-6R	RPHT1204MO-SS
EMRF-6R-50-22	4	A	50	22	50	10.4	6.3				
EMRF-6R-63-22	4	A	63	22	50	10.4	6.3				